



APV Kompakva 36+/54+ Water heater

Product description

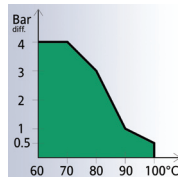
The APV Kompakva 36+/54+ is a water heater for heating of domestic water in single family homes and apartment buildings of up to eight apartments. The simple and extremely compact design makes the APV Kompakva 36+/54+ the smallest unit of its type on the market.

- The smallest on the market
- Smart and compact design
- Low operating costs
- Output capacity 1-8 houses

Application

The APV Kompakva 36+/54+ can be connected directly to the district heating network at maximum flow temperature of 130°C. Operating conditions depend upon differential pressure and the temperature of the district heating water.

The graph illustrates operating conditions without the need for a differential pressure controller. The use of a differential pressure controller set at a maximum value of 40 kPa is recommended for levels outside the green area.



Components and function

The APV Kompakva 36+/54+ consists of three main components: An APV multifunctional block, a plate heat exchanger and a thermostatic valve.

APV multifunctional block

The multifunctional block functions as a pipe arrangement, cover, back panel and sensor accelerator. The special channel design combined with the position of the sensor in the multifunctional block accelerates the closing function of the valve. This contributes to low energy consumption and reduces operating costs.

Temperature control

The thermostatic valve ensures a consistent temperature of the hot domestic water. When the district heating unit is not in use, the thermostatic valve ensures a suitable idle temperature. This means that hot water is available within a few seconds, and unheated domestic water is not wasted.

Domestic water circulation

The APV Kompakva 36+/54+ is ready-fitted for domestic water circulation installations ensuring hot water as soon as the tap is turned on, no matter how far the tap is from the water heater. Circulation pipes can be connected to the built-in 1/2" end caps - or outside the unit.

Domestic water safety equipment

The domestic water heating system must be fitted with a safety valve in accordance with local regulations. The multifunctional block makes it possible to remove the 1/2" end cap and mount a safety valve (pos.3).

Note: Safety valve, non-return valve and circulation pump are not supplied by APV.

Mounting

The APV Kompakva 36+/54+ is designed for wall-mounting. Fitting is simple and the positioning of all pipe connections at pipe bracket distance from the wall facilitates a neat pipe arrangement.

The APV water heater can replace most existing models on the market. The position of the connections and their intervals is the same.

Cabinet

APV Compakva 36+ for single family homes is supplied in a grey metallic plastic cabinet (W: 275 mm, H: 365 mm, D: 150 mm) in a simple and functional design. Easy to attach, de-attach, and clean.

Packaging

APV Compakva 36+ comes in shock-resistant packaging.



Cabinet for APV Compakva 36+

Technical data and specifications

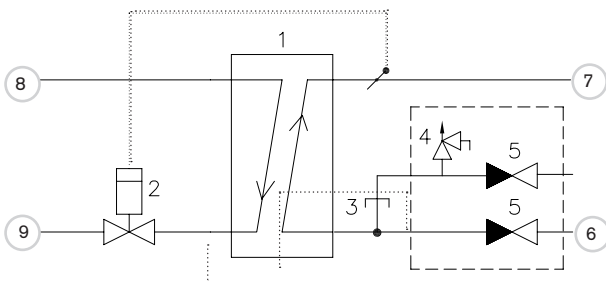
Domestic water system						
APV Type	Total pressure loss (DH) kPa	District heating temp.	Domestic water temp.	Capacity kW	Domestic water l/h	No. of houses
Compakva 36+	25	60/19,5°C	10/45°C	32,3	795	1
Compakva 36+	30	60/21°C	10/45°C	42,4	1043	1
Compakva 54+	35	60/20°C	10/45°C	55	1354	1-4
Compakva 54+	35	70/20°C	10/50°C	68	1465	1-8

Measurements (without cabinet)

APV Type	Width mm	Height mm	Depth mm	Weight kg
Compakva 36+	260	350	135	13,3
Compakva 54+	260	350	160	15

Pressure level	PN16
Max temp.	130°C
Connections	3/4"
Materials	Red brass/stainless steel AISI 316

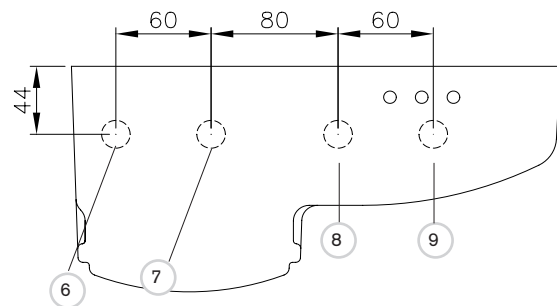
Flow diagram



1. APV domestic water heat exchanger
2. Thermostatic valve
3. 1/2" end cap for circulation pipe
4. Safety valve
5. Non-return valve*

* Not part of APV delivery

Connections seen from above



6. Cold domestic water inlet
7. Hot domestic water outlet
8. District heating water inlet
9. District heating water outlet

APV, An SPX Brand, Platinvej 8, 6000 Kolding, Denmark
 Phone: +45 70 278 444 Fax: +45 70 278 445
 Email heat.europe@apv.com

For more information about our worldwide locations, approvals, certifications, and local representatives, please visit www.apv.com.

SPX Corporation reserves the right to incorporate our latest design and material changes without notice or obligation. Design features, materials of construction and dimensional data, as described in this bulletin, are provided for your information only and should not be relied upon unless confirmed in writing.

Issued: 10/2008 1002-03-10-2008-GB

Copyright © 2005 SPX Corporation

SPX[®]
 WHERE IDEAS MEET INDUSTRY