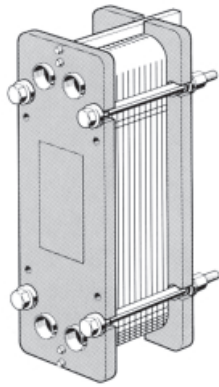




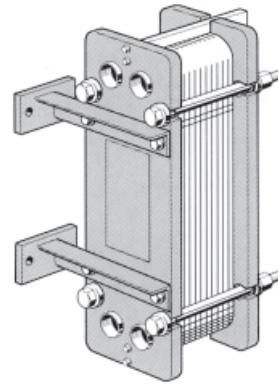
Improving Process Profitability...Continuouslysm

Data Sheet

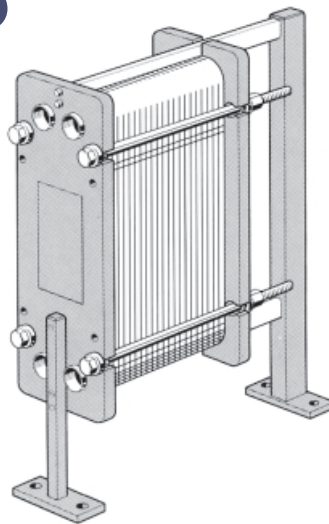
Heat Exchange



T4 M-16/25



T4 MV-16/25



T4 MGS-16/25

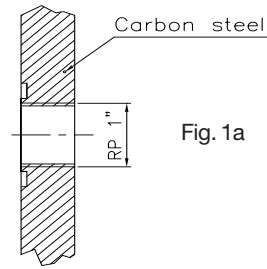
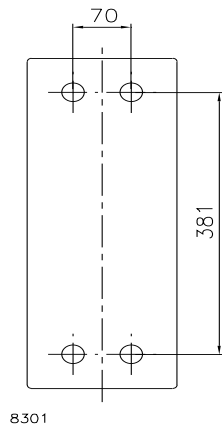


Fig. 1a

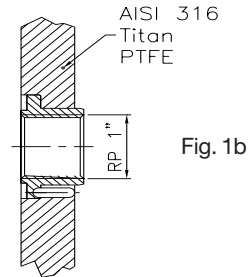
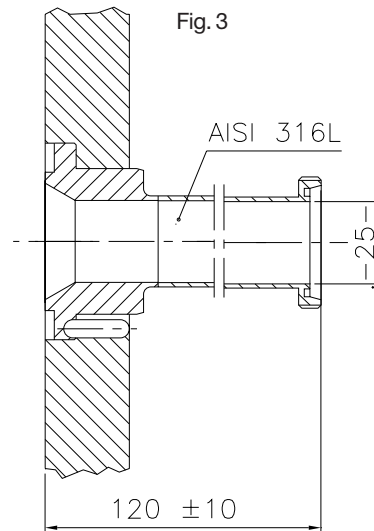
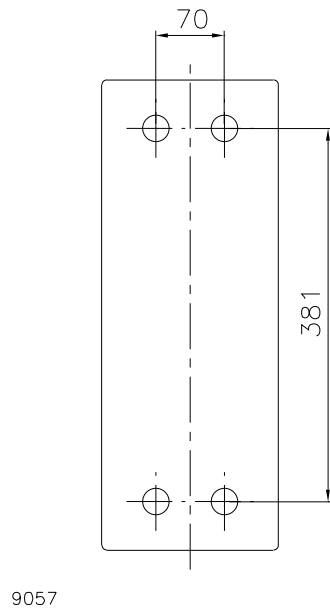
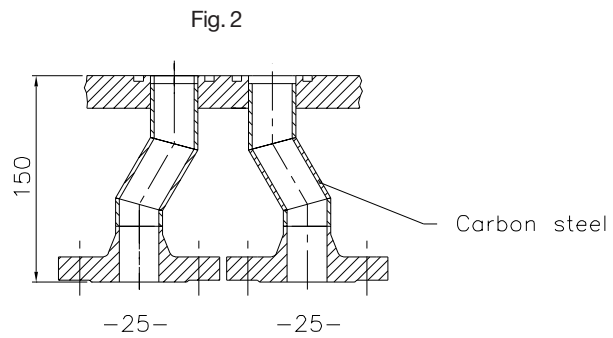
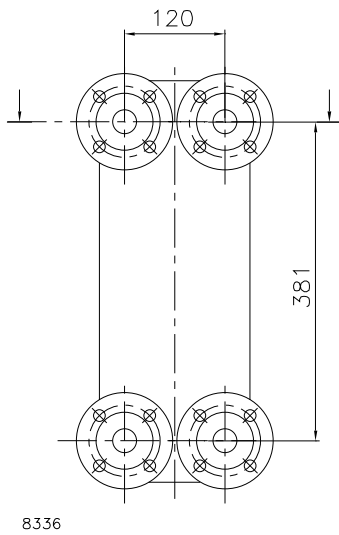


Fig. 1b



FRAME DESIGN

Painted: Blue finish, Ral 5010.
 Type: M - 4 pcs. 12 mm holes in the head for fastening.
 Type: MV - Brackets for clamping on wall.
 Type: MGS - Bracket and column for clamping on foundation plate.
 Design pressure: 16 bar (1.6 MPa).
 25 bar (2.5 MPa).

CONNECTIONS

Pipe Thread:
 RP 1" directly in the head, fig. 1a.
 In stainless steel socket (AISI 316/Titan/PTFE) fig. 1b.

Flange:
 -25- NP 16 flange, BS 4504/DIN 2501 fig. 2.
 -25- NP 25 flange, BS 4504/DIN 2501 fig. 2.

Sanitary:
 Pipe connection fig. 3.
 Nom. diameter 25 mm.
 Available with welded nipple in the following types DS/BS/ISO/SMS/Clamp, as well as NW 25 (DIN 11851).

GESTELLAUSFÜHRUNGEN

Lackiert: Blau Ral 5010.
 Typ: M - 4 Stck. 12 mm Gewindelöcher im festen Deckel für Befestigung.
 Typ: MV - Konsolen für Befestigung an Wand.
 Typ: MGS - Konsole und Abstützung für Befestigung auf Fundamentplatte.
 Konstruktionsdruck: 16 bar (1,6 MPa).
 25 bar (2,5 MPa).

ANSCHLÜSSE

Rohrgewinde:
 RP 1" direkt im Deckel, Fig. 1a.
 Nichtrostender Stahl Muffe (AISI 316/Titan/PFTE), Fig. 1b.

Flansche:
 -25- Flansch ND 16, BS 4504/DIN 2501, Fig. 2.
 -25- Flansch ND 25, BS 4504/DIN 2501, Fig. 2.

Sanitär:
 Rohranschluss Fig. 3.
 Nom. Diameter 25 mm.
 Wird mit angeschweisstem Nippel in folgenden Typen geliefert: DS/BS/ISO/SMS/Clamp, sowie NW 25 (DIN 11851).

STATIVUDFØRELSE

Malet: Blå lakeret, Ral 5010.
 Type: M - 4 stk. 12 mm gevindhuller i fast dæksel (head) for fastgørelse.
 Type: MV - Konsoller for fastspænding på væg.
 Type: MGS - Konsol og søjle for fastspænding på fundament.
 Konstruktionstryk: 16 bar (1,6 MPa).
 25 bar (2,5 MPa).

TILSLUTNINGER

Rørgevind:
 Rp 1" direkte i dækslet, fig. 1a.
 Rustfri stål muffe (AISI 316/Titan/PTFE), fig. 1b.

Flange:
 -25- flange Tn 16, BS 4504/DIN 2501, fig. 2.
 -25- flange Tn 25, BS 4504/DIN 2501, fig. 2.

Sanitær:
 Rørtilslutning, fig. 3.
 Nom. diameter 25 mm.
 Leveres med påsvejst nippel i følgende typer DS/BS/ISO/

Alternatively, a complete union.

PLATES

Thermally long/thermally short.
 Effective area: 0.04 m.
 Material: Stainless steel: AISI 316.
 Hastelloy C-276.
 Titanium (only types M, MV, MGS-16).

GASKETS

Rubber: NBR - EPDM - FPM - CR - GRAF.

PRESSURE

APV's frame designs are based on the SVENSKE TRYCK-KÄRLSNORMER for max. 120° C, where the ratio of test pressure to working pressure is 1.3.

ALTERNATIVE DESIGNS

Frames in different colours and/or types of painting. Frames according to different standards, for higher temperatures or pressure. Plates in different materials. Counter flanges. Gaskets in IT. Connecting unions according to different standards. The listed types are all available with intermediate frames, safety screens as well as insulating jacket.

Die Alternative, eine komplette Verschraubung.

PLATTEN

Thermisch lang/thermisch kurz.
 Effektive Fläche: 0,04 m².
 Material: Nichtrostender Stahl: AISI 316.
 Hastelloy C-276.
 Titan (Nur Typ M, MV, MGS-16).

DICHTUNGEN

Gummi: NBR - EPDM - FPM - CR - GRAF.

DRUCK

APV's Gestellkonstruktionen basieren sich auf SVENSKE TRYCKKÄRLSNORMER für max. 120° C, wo das Verhältnis zwischen Probedruck und Arbeitsdruck 1,3 ist.

ALTERNATIVE AUSFÜHRUNGEN

Gestelle in anderen Farben und/oder Typen von Lackierungen. Gestelle nach anderen Normen, für höhere Temperaturen und höheren Druck. Platten aus anderen Materialien. Gegenflansche. Dichtungen in IT. Anschlussverschraubungen nach anderen Normen. Alle erwähnten Typen sind mit Zwischenrahmen, Blechschutzplatten sowie Isoliermantel erhältlich.

SMS/clamp, samt NW 25 (DIN 11851).

Alternativ, komplet union.

PLADER

Termisk lange/termisk korte.
 Effektivt areal: 0,04 m².
 Materiale: Rustfrit stål: AISI 316.
 Hastelloy C-276.
 Titan (kun type M, MV, MGS-16).

PAKNINGER

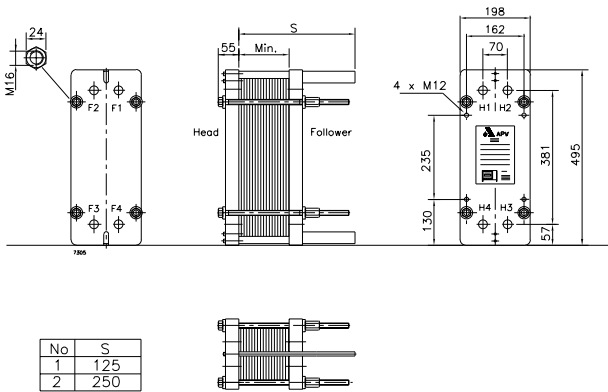
Gummi: NBR - EPDM - FPM - CR - GRAF.

TRYK

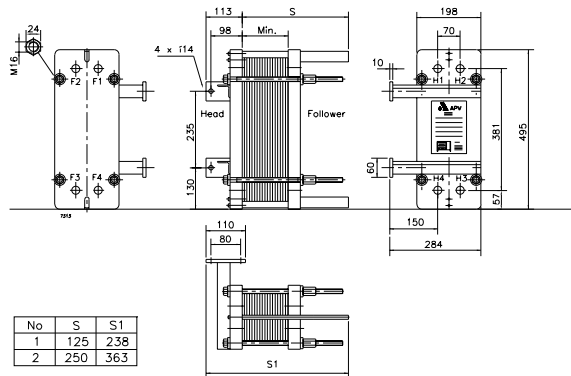
APV's stativkonstruktioner er baseret på SVENSKE TRYCK-KÄRLSNORMER for max. 120° C, hvor forholdet mellem prøvetryk og arbejdstryk er 1,3.

ALTERNATIVE UDFØRELSE

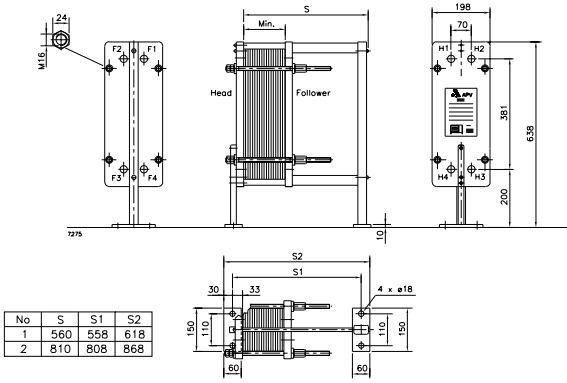
Stativer i andre farver og/eller malingstyper. Stativer efter andre normer, højere temperaturer eller tryk. Plader i andre materialer. Modflanger. Pakninger i IT. Tilslutningsunioner efter andre normer. Alle nævnte typer kan leveres med mellemrammer, skærmlader samt isoleringskappe.



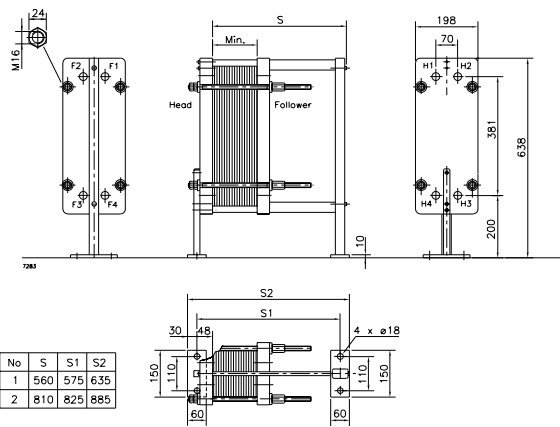
T4 M-16/25



T4 MV-16/25



T4 MGS-16



T4 MGS-25



Agent/Distributor - Vertreter - Forhandler:

Worldwide Headquarters
APV Limited
 23 Gatwick Road, Crawley
 West Sussex RH10 2JB
 United Kingdom
 T: +44 (0)1293 527777
 F: +44 (0)1293 552640
 Internet: www.apv.com

Local Office
APV
 Platinvej 8
 DK-6000 Kolding
 Denmark
 T: +45 75 50 11 33
 F: +45 75 50 34 34
 Internet: www.apv.com



ASME »U« Approved Company